



www.continentalsports.co.uk

Electrically operated, roof retractable basketball goals Information pack



Continental Sports' roof retractable basketball goals feature the following:

- Robust steel construction
- Stabiliser wires with bungee cable retractors to ensure smooth operation
- 3-phase winch operation for added durability, longevity, accuracy and reduced maintenance costs
- Bespoke construction to suit your roof structure and hall dimensions
- A wide range of options to suit your requirements:
 - Timber backboards (not mdf)
 - Perspex backboards
 - Fixed rings
 - Slam-dunk pressure release rings
 - Load arrestor – freefall safety devices
 - Bolt-on TuffGuard backboard padding
 - Hydraulic height adjustment mechanism
 - Remote control operation



Bolt on
backboard
padding



Bespoke
control panel



Ultra heavy-duty
3-phase winch motor



Load
arrestor
safety
device



Remote
control key-
fob



www.continentalsports.co.uk

Control options

Continental offers two options for the method of controlling the goals. Both are available at the same cost, and both use our tried and tested ultra-heavy duty 3-phase winch for simultaneous operation of a pair of goals. Therefore when specifying your goals please choose one of the following alternatives:

Wall mounted control panel

We fix a control panel on a wall outside the sports hall – typically in a store, or a viewing gallery. The chosen location must enable the user to see the goals moving while the control keys are being pressed.

The advantages of this method are that the panel is lockable and access can be restricted, and there is no remote control to lose. Furthermore this method ensures that the user must be in sight of the goals when they are moving so as to ensure no-one is under the goals when they are moving and that the winch cable is not snagged.

Remote control operation

We provide a key-fob with a radio frequency remote control operation (so line-of-sight to the goal is not necessary).

The key-fob is a one press UP/DOWN operation with an emergency stop key.

The advantages of this method are that the keyfob can be kept in a secure location (eg. PE office) when not being used.

Potential disadvantages of this method are that the keyfob may be dropped or lost as is typically put in a user's pocket during activity. Also as the RF range of the keyfob is substantial, there is the risk that someone operates the goals when they cannot see them moving which is a health and safety risk – i.e. the goals should not be moved when people are under them.

PLEASE NOTE THAT THE ELECTRICAL PROVISION NECESSARY TO SUIT THE ABOVE OPTIONS ARE DIFFERENT. THEREFORE PLEASE ENSURE YOU COMPLY WITH THE SPEC SHEET APPLICABLE TO YOUR CHOICE OF CONTROL METHOD – SEE THE TWO SPEC SHEETS BELOW



www.continentalsports.co.uk

ELECTRICAL PROVISION – TO SUIT CONTROL PANEL OPERATION

Provision of 3-phase power to the control panel and control wires from the panel to the winch is required (by others) to suit our requirements in accordance with the following:

We provide a 900lbs / 405kgs capacity, three phase hoist unit with a fabricated steel mounting frame designed for connection to the roof structure above the centre line of the basketball court, complete with a control panel having lockable push buttons mounted on the lid, to be positioned adjacent to the Sports Hall according to clients' requirements.

In connection with the above mentioned control panel, the basketball goals must be visible from the site position of this panel so as to observe full operation of both goals.

We require **seven** number 2.5mm or 1.5mm cables **plus an earth** (cpc) (coloured or numbered at each end) in a conduit, from the control panel (typically in the store room) to a 100mm x 100mm x 50mm knock out adaptable box (moulded plastic box if using plastic conduit) fitted at the hoist unit position (typically immediately in front of one of the basketball goals in the folded position in the roof-space).

Approximately 2.0 metres extra length of cable is required at the hoist unit.

A seven core S.W.A. may be used between control panel and hoist unit if preferred.

Additionally, a three phase 10 amp power supply is required to a fused switch alongside the control panel (neutral not required) which must be made live before our fitters arrive on site to fix the hoist unit (additional cost will be involved if this supply is not live).

Read in conjunction with drawings no. SH-02 and SH-07.

We can provide a wiring diagram for the above if required.

Please note that the load that is applied to the facility's electrical system when the winch is operating is 2.4 amps.

***For clarification or confirmation please call
Continental on 01484 542 051***



www.continentalsports.co.uk

ELECTRICAL PROVISION – TO SUIT REMOTE CONTROL OPERATION

Provision of 3-phase power to the winch is required (by others) to suit our requirements in accordance with the following:

We provide a 900lbs / 405kgs capacity, three phase hoist unit with a fabricated steel mounting frame designed for connection to the roof structure above the centre line of the basketball court, complete with an FM radio control receiver panel attached to the winch unit. Control is via a hand-held key-fob transmitter which requires batteries..

We require provision by others of a **3-phase, neutral and earth (cpc) 16amp socket** to be fixed by others **at the winch location**.

Additionally, provision must be made to enable low level isolation of the roof mounted socket in case of misuse or malfunction of the winch unit.

The roof mounted socket must be made live before our fitters arrive on site to fix the hoist unit (additional cost will be involved if this supply is not live).

Read in conjunction with drawings no. SH-02.

Please note that the load that is applied to the facility's electrical system when the winch is operating is 2.4 amps.

***For clarification or confirmation please call
Continental on 01484 542 051***



www.continentalsports.co.uk

SECONDARY STEELWORK PROVISION

We require secondary support steelwork to be installed by others to suit the goals in accordance with the following:

Two pairs of horizontal support steels at 1.2m centres about the centre line of the court.

The steels typically span 3.5m behind to 3.5m in front of the backboard when in the play position.

There must be a 300mm clear gap above the steels to accommodate the winch and hinge mechanism.

Profile of the steel is to be decided by others – we can fix to box section, “I”-section or channel.

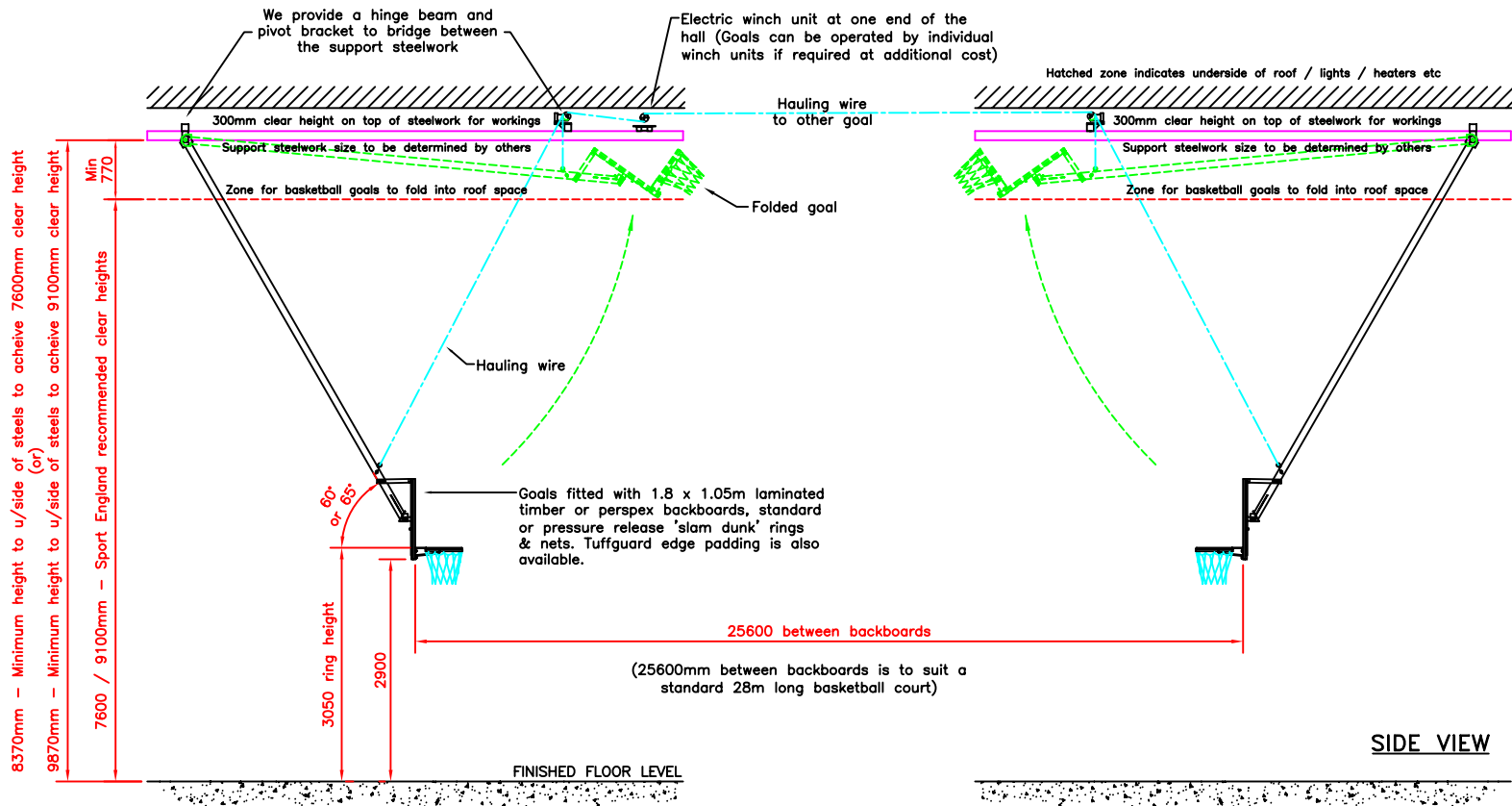
The steel must be capable of accepting a 254kg S.W.L at any point along its length.

Please refer to drawing SH-02 for additional information.

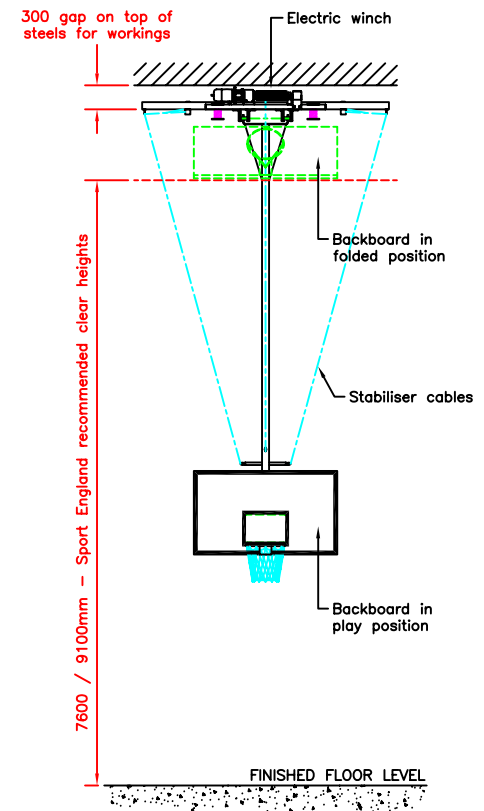
The exact specification and dimensions of steel depend on the length and height of the hall, the location of services in the roof space and the roof structure.

Therefore it is essential that any steelwork design drawings are provided to Continental Sports Ltd for approval prior to manufacture or installation.

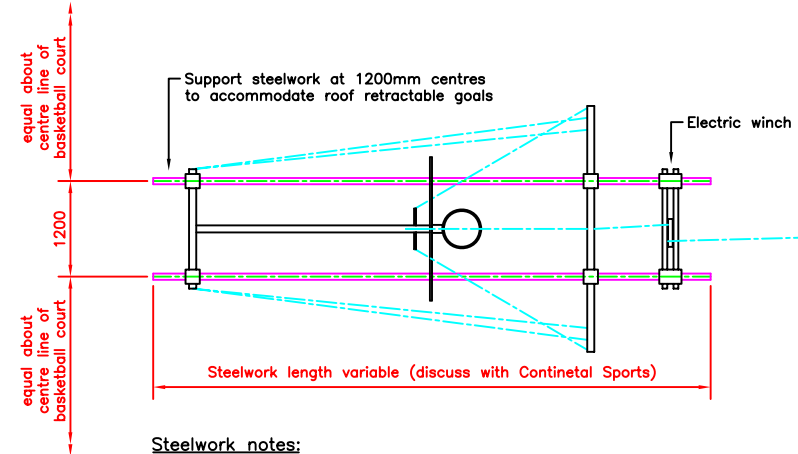
*For clarification or confirmation please call
Continental on 01484 542 051*



SIDE VIEW

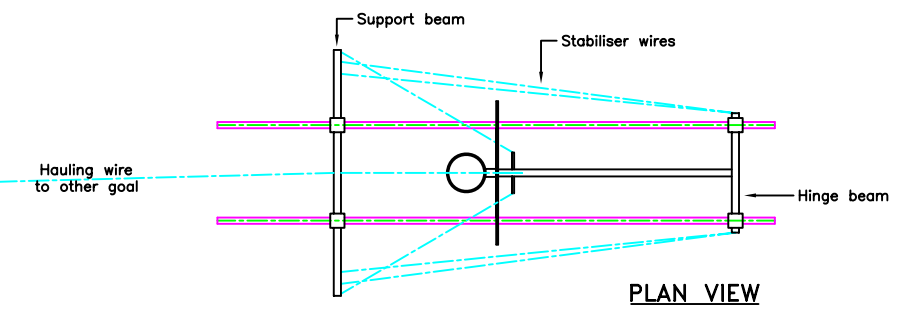


FRONT VIEW



Steelwork notes:

Suitable support steelwork should be provided approximately 3.5 metres in front and behind, the front face of the basketball board in the play position. There must be a 300mm gap above the steelwork to accommodate the winch & workings. The steelwork installed must be capable of accepting 254 kgs S.W.L. at any point along its length and two sections of steel at 1.2 metres centres are necessary.



PLAN VIEW

Before any steelwork is installed please forward design drawings to drawingoffice@contisports.co.uk for comment / approval.

Also see information sheets and drawing nos SH-06 and SH-07.

Continental Sports Limited
The copyright of this drawing and any supplementary information issued shall remain vested in Continental Sports Limited. It shall not be passed to any other party without the express written consent of an authorised director of Continental Sports Limited.

Tolerances as detailed on SPE001 unless noted on the dimension.
ALL DIMENSIONS ARE GIVEN IN MILLIMETRES.
DO NOT SCALE OFF DRAWING.

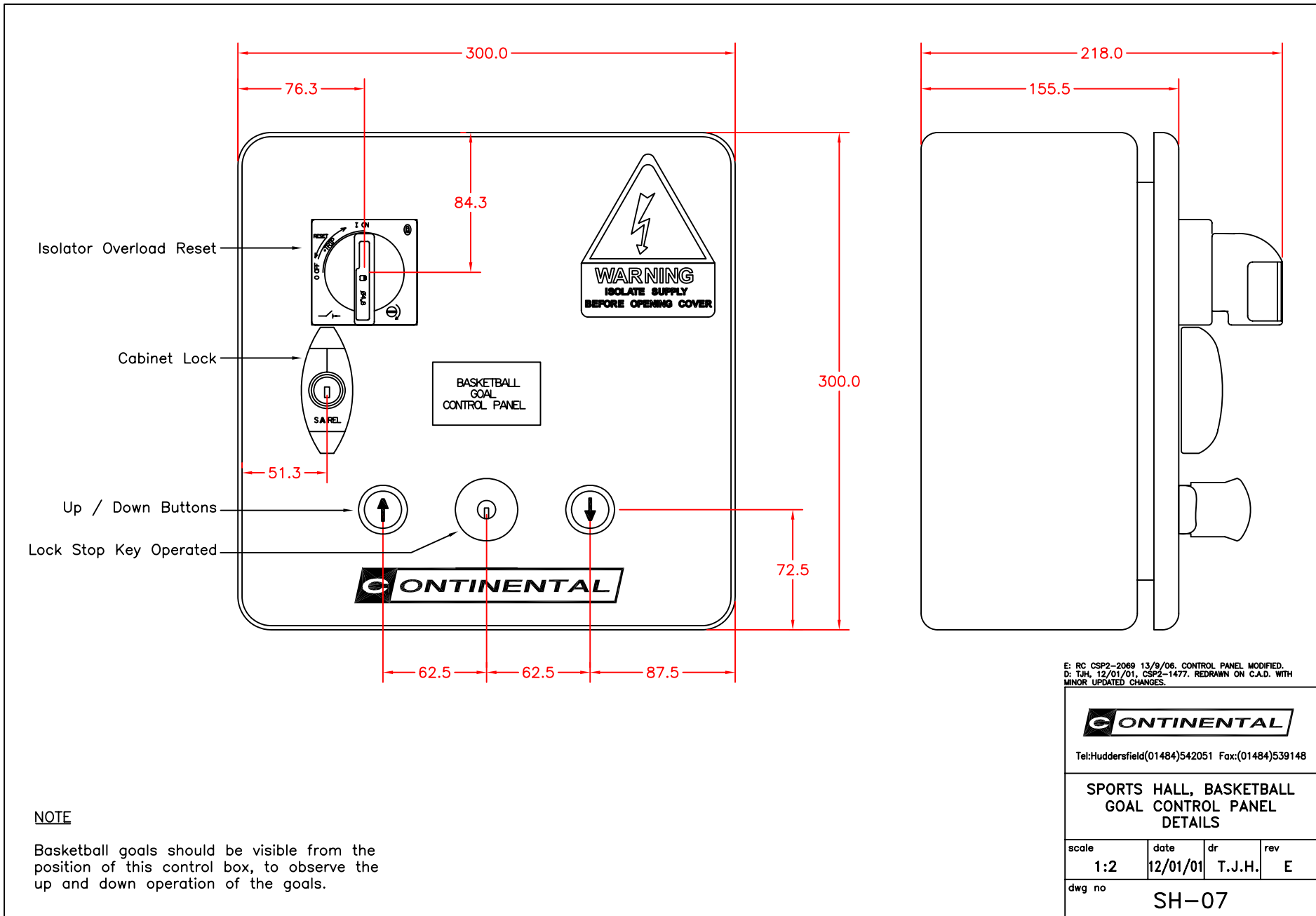
D: RC CSP2-2218 4/11/09. DRAWING REDRAWN & UPDATED. WINCH IN MIDDLE OF HALL REMOVED. HEIGHTS ADDED.
C: RC 28/09/06. CSP2-2072. BACKBOARD NOTE ADDED.
B: TSH 11/01/01. CSP2-1477. REDRAWN ON C.A.D. WITH MINOR UPDATED CHANGES.

CONTINENTAL
Continental Sports Limited
Paddock, Huddersfield HD1 4SD
Tel: Huddersfield (01484) 542351 Fax: (01484) 539148
Website: <http://www.continental-sports.co.uk>
E-Mail: sales@contisports.co.uk

Continental Sports Limited accepts no responsibility for ensuring compliance of this layout with any relevant legislation.

SPORTS HALL, Electric Winch Operated Overhead Retractable Basketball Goals.

scale	date	dr	rev
1:50	11/1/01	TJH	D
projection	dwg no	SH-02	



NOTE

Basketball goals should be visible from the position of this control box, to observe the up and down operation of the goals.

E: RC CSP2-2069 13/9/06. CONTROL PANEL MODIFIED.
 D: T.J.H. 12/01/01. CSP2-1477. REDRAWN ON C.A.D. WITH MINOR UPDATED CHANGES.

CONTINENTAL
 Tel:Huddersfield(01484)542051 Fax:(01484)539148

**SPORTS HALL, BASKETBALL
 GOAL CONTROL PANEL
 DETAILS**

scale	date	dr	rev
1:2	12/01/01	T.J.H.	E

dwg no **SH-07**