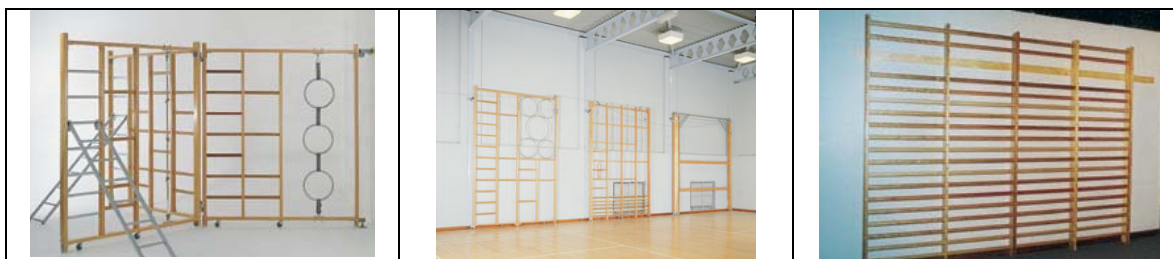




The UK market leaders in the manufacture,
supply and installation of
Gymnasium Equipment

Specialists in:

GYMNASIUM INSTALLATIONS



Continental Sports Limited
Paddock, Huddersfield, West Yorkshire, England, HD1 4SD
Tel: (01484) 542051 Fax: (01484) 539148
E-mail: sales@contisports.co.uk Web: www.continentalsports.co.uk



COMPANY PROFILE

Continental Sports Ltd. is the UK's leading manufacturer and installer of Gymsium equipment.

Formed 40 years ago, we employ 100 people in the design, manufacture, installation and maintenance of products for **sports halls, changing rooms, physical education, trampolining and gymnastics.**

We have successfully designed, manufactured and installed a large number of gymnasium projects both in the UK and overseas and have developed a wealth of knowledge and expertise in the subject.

If you wish us to help with the design of the gymnasium, we are confident that our Drawing Office technicians can offer the most efficient and cost effective layout. We can also advise on and provide a suitable range of best-value products.

As the country's leading sports hall and gymnasium maintenance provider, Continental has contracts with many local authorities throughout the UK. Our experienced and certified maintenance and installation technicians provide nationwide service support. They are backed up by large stocks of spare parts for both our own and other suppliers' products, and the bespoke fabrication capabilities of our UK manufacturing facility. We also offer the same level of support for individual maintenance orders.

We are an ISO-9001:2000 accredited company and we successfully retain our number one position in the industry by offering benchmark quality products and services at very competitive prices.

What we need to provide a definitive quotation:

Steelwork drawings

- Main layout or roof section showing beams, columns and purlin sizes, also pitch of roof beams.

Architect drawings

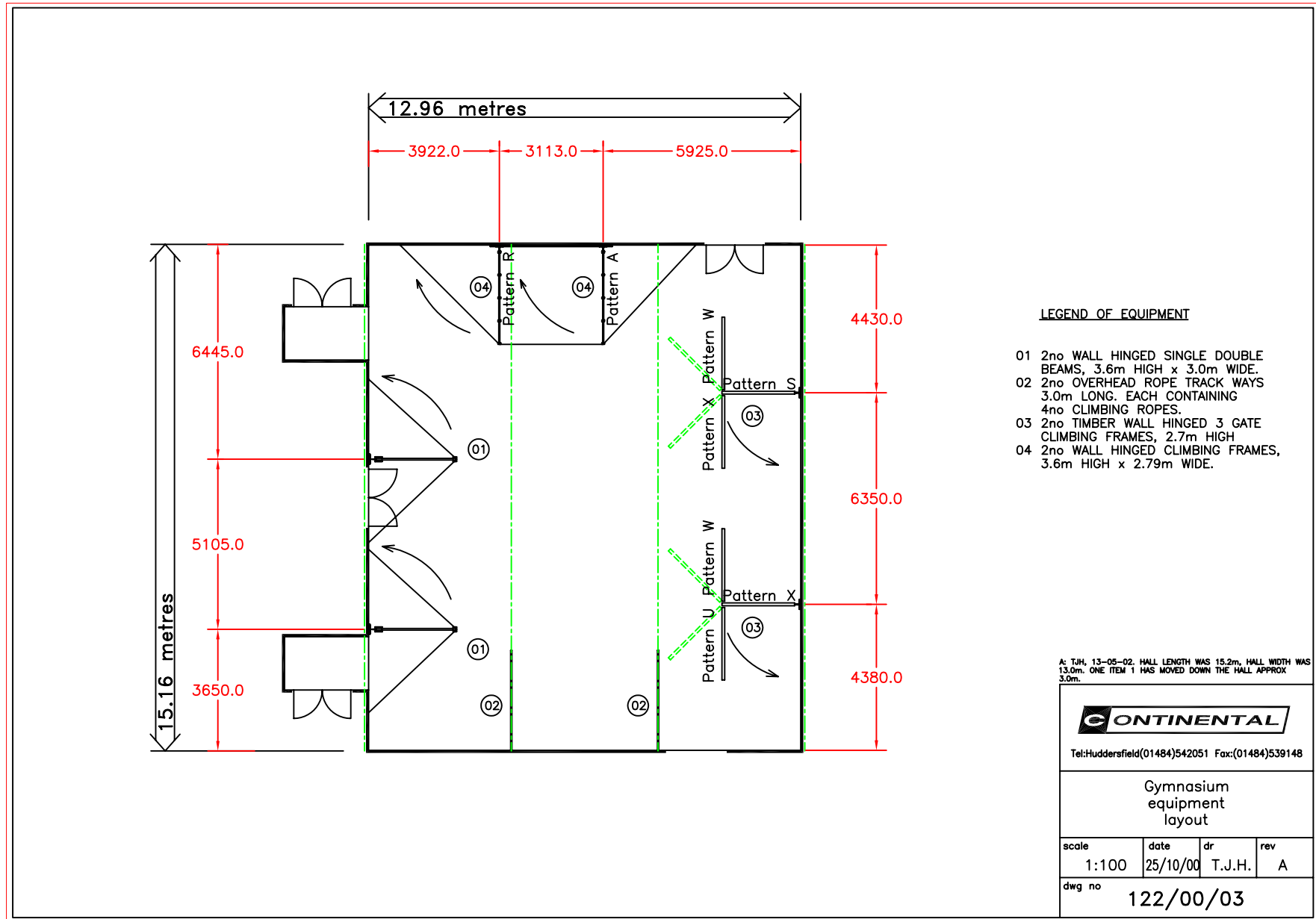
- Main ground and first floor layout plans showing room / hall sizes.
- Section through side and end walls from floor to roof showing types of wall construction (cladding etc.) plus floor type and heights of beams at eaves and apex.
- Main lighting and heating drawings showing positions and height above finished floor level.

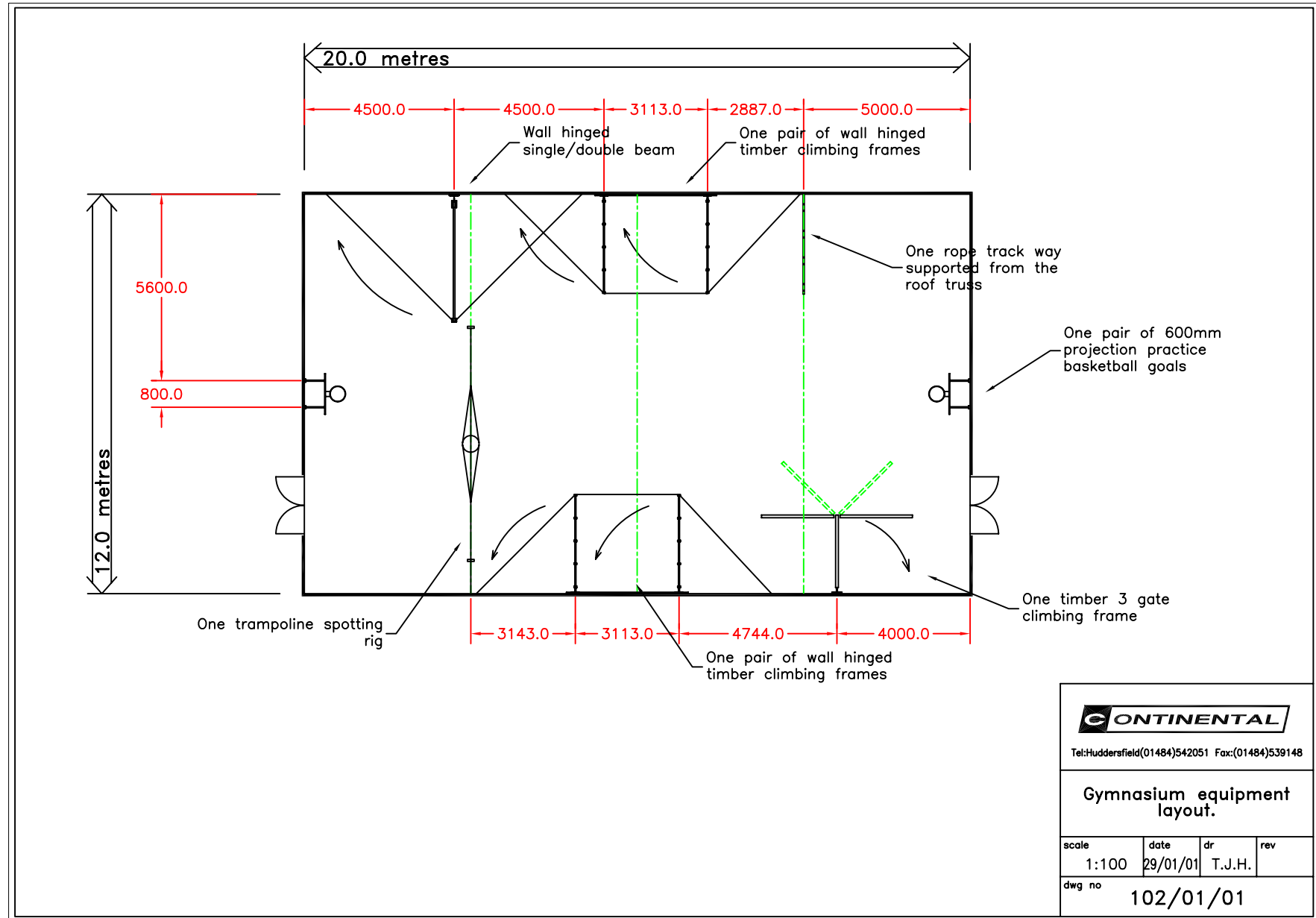
Please send to Continental Sports Limited, marked for the attention of Sean McLoughlin, Business Development Manager.

Index of drawings included in this information pack:-

(Each of these drawings is available on our website in a format readable by Autocad – see the specifiers section of www.continentalsports.co.uk for more information.)

122/00/03	Gymnasium equipment layout
102/01/01	Gymnasium equipment layout
sh/03	Overhead trackway details
sh/14	Wall hinged timber climbing frames
sh/15	Wall hinged timber climbing frames
sh/16	Wall hinged timber climbing frames (2)
sh/17	Wall hinged cantilever beam units
sh/18	Cantilever beam units
WB/01	Fixed wallbars
274:04	Floorplate installation
274:22	Floor anchorages, semi sprung floor





CONTINENTAL
 Tel:Huddersfield(01484)542051 Fax:(01484)539148

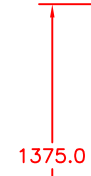
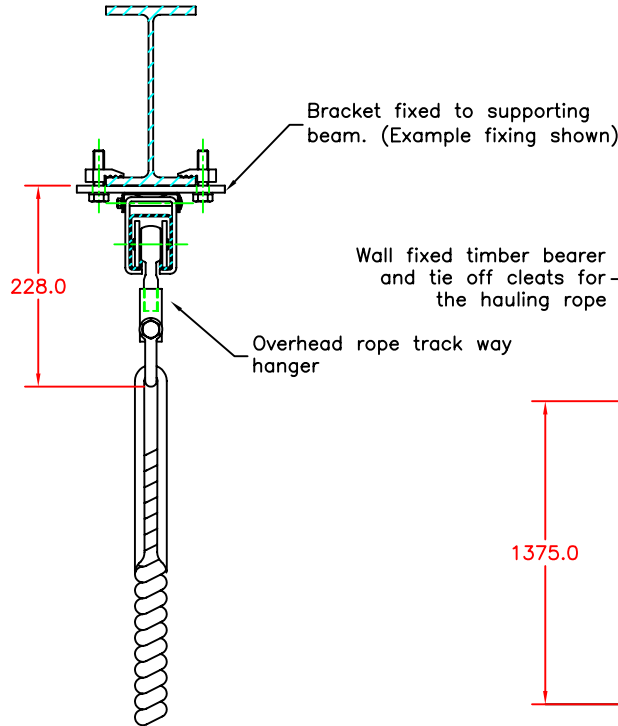
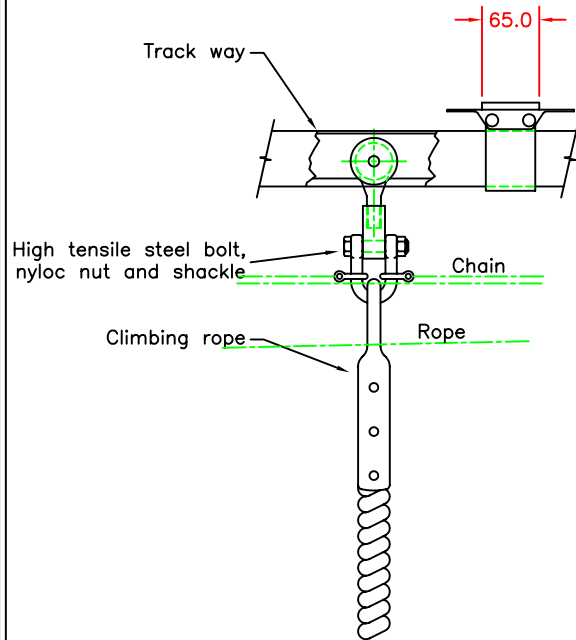
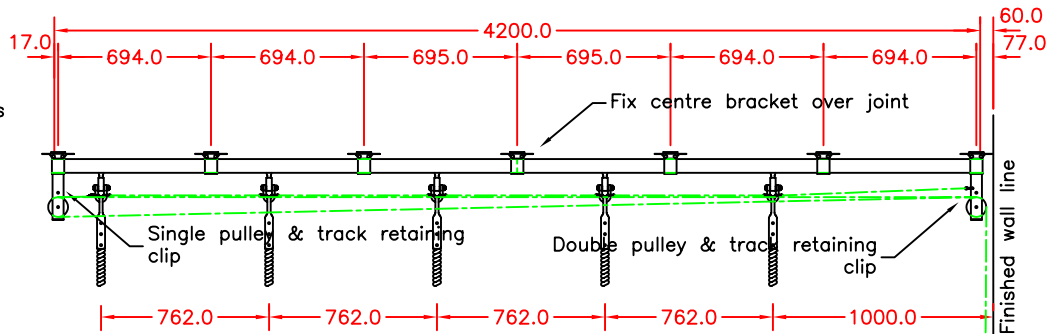
Gymnasium equipment layout.

scale	date	dr	rev
1:100	29/01/01	T.J.H.	

dwg no 102/01/01

Details of ceiling height and construction should be sent to us along with your requirements with regard to number of ropes, ladders, rings etc.

In case of new buildings we have to place our brackets onto the supporting beam at an early date before any suspended ceiling panels are fitted.



CAPACITY 90kg (200lb) per rope hanger in accordance with B.S. 1892: Part 2 1972.

APPLICATION Overhead track way system for supporting vertical climbing ropes, rope ladders, rings, trapeze, linked rings in gymnasiums and sports halls where multiple ropes are required to move across a room from a convenient stacking position.

FIXING Soffit fixing is usual to adequate support beam. Bracket centres are no greater than 900mm. Hangers are usually spaced at 762mm centres to give up to five drops with connecting chain linking each.

TRACK Steel, galvanised to B.S. 2989: Standard length 2100mm.

BRACKETS Pressed steel formed and painted.

HANGERS Two steel wheels, malleable body ball bearing lubricated for life. Forged steel shackle, body painted.

D: T.J.H CSP2-1450 31/10/00. RE DRAWN ON CAD WITH MINOR CHANGES

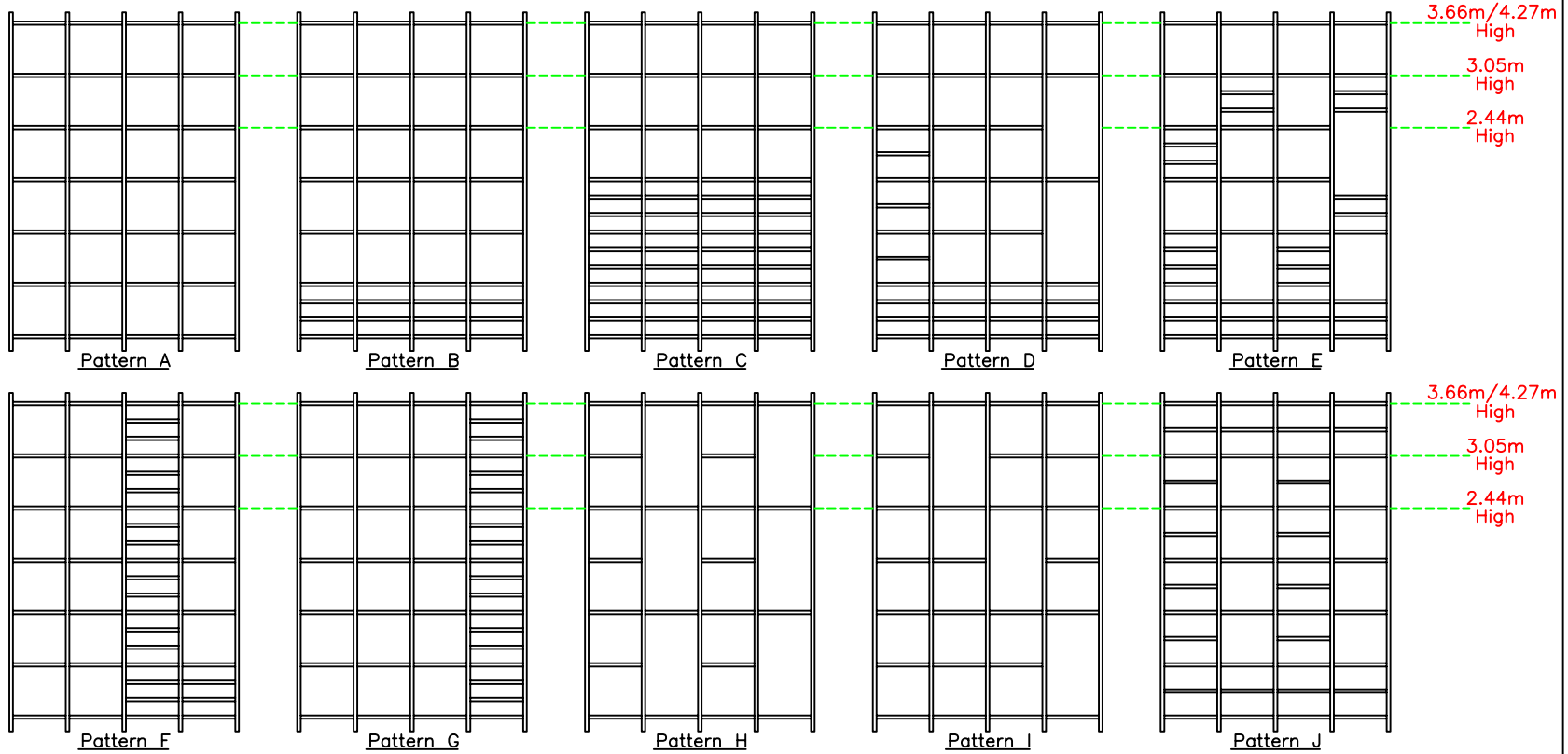


Tel:Huddersfield(01484)542051 Fax:(01484)539148

OVERHEAD ROPE TRACK WAY DETAILS

scale	date	dr	rev
1:20 & 1:5	31/10/00	T.J.H.	D

dwg no SH/03



NOTE
Overall width of each frame is 2792mm.

Examples of wall hinged timber climbing frames to B.S. 1892 available from Continental Sports Ltd

B: PJ, 04/09/01, CSP2-1533. SPACING INCREMENTS AMENDED.
A: T.J.H. 16/01/01, CSP2-1477. REDRAWN ON C.A.D. WITH MINOR UPDATED CHANGES.

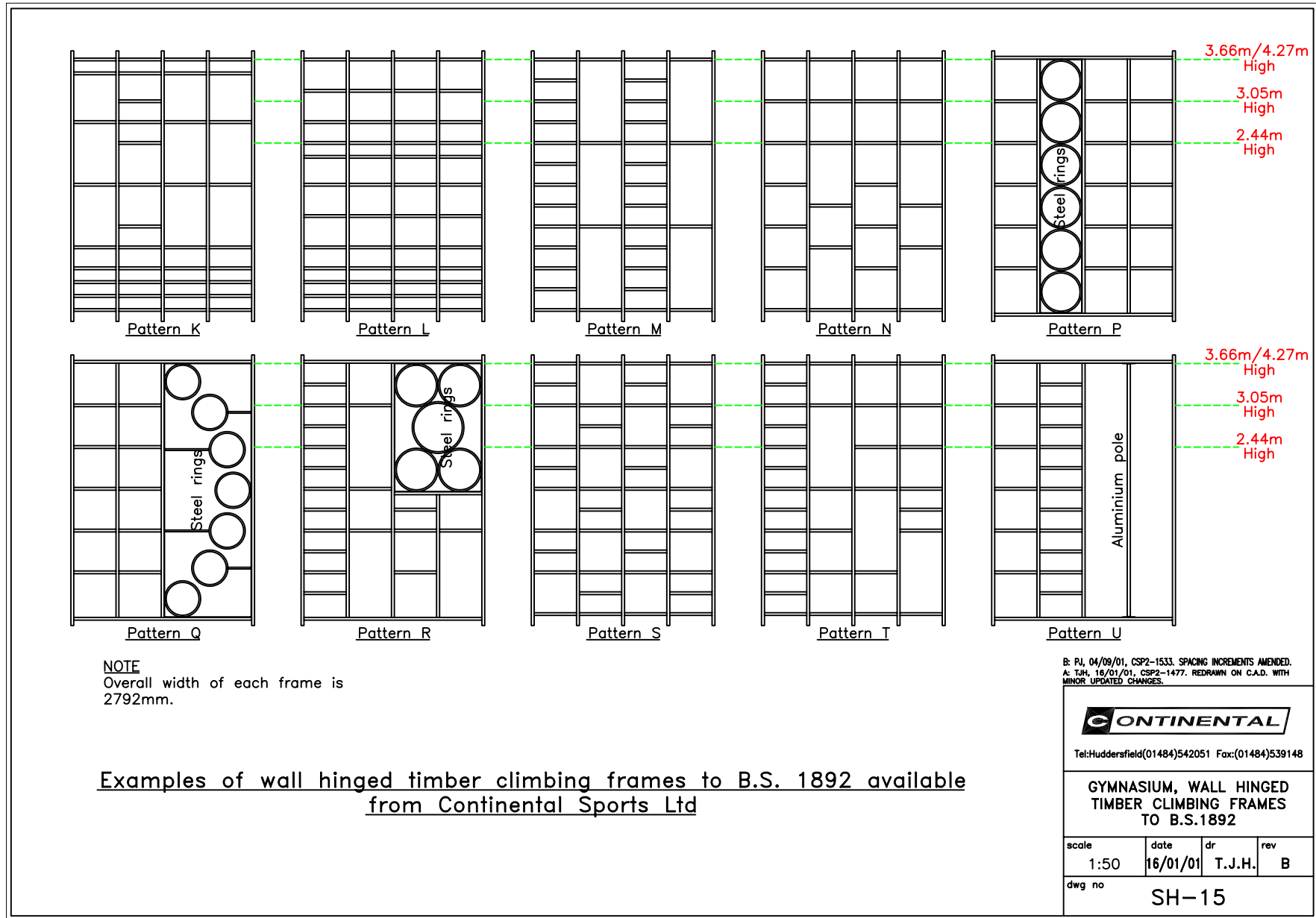


Tel:Huddersfield(01484)542051 Fax:(01484)539148

**GYMNASIUM, WALL HINGED
TIMBER CLIMBING FRAMES
TO B.S.1892**

scale	date	dr	rev
1:50	16/01/01	T.J.H.	B

dwg no
SH-14



B: PJ, 04/09/01, CSP2-1533. SPACING INCREMENTS AMENDED.
 A: T.J.H., 16/01/01, CSP2-1477. REDRAWN ON C.A.D. WITH MINOR UPDATED CHANGES.



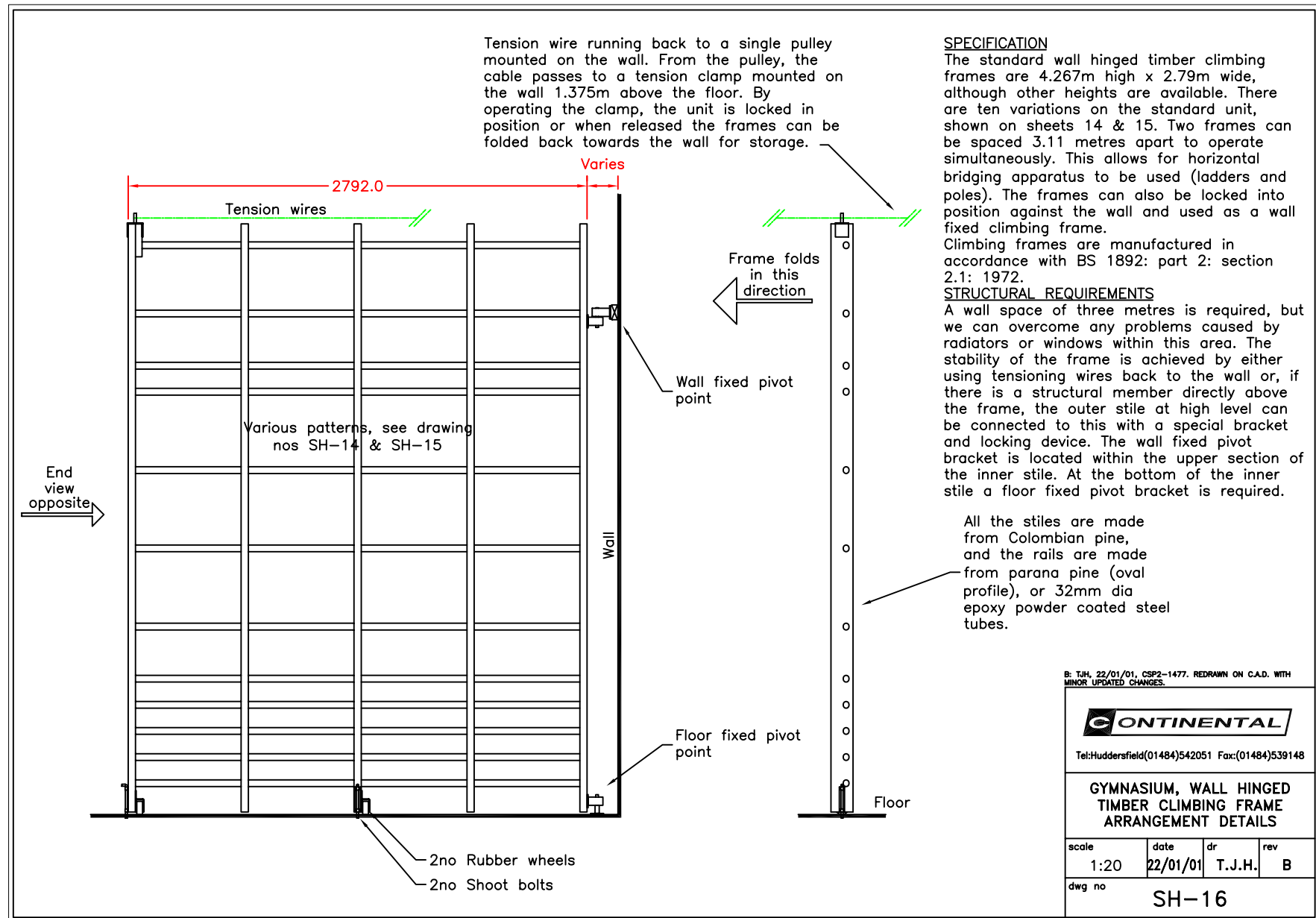
Tel:Huddersfield(01484)542051 Fax:(01484)539148

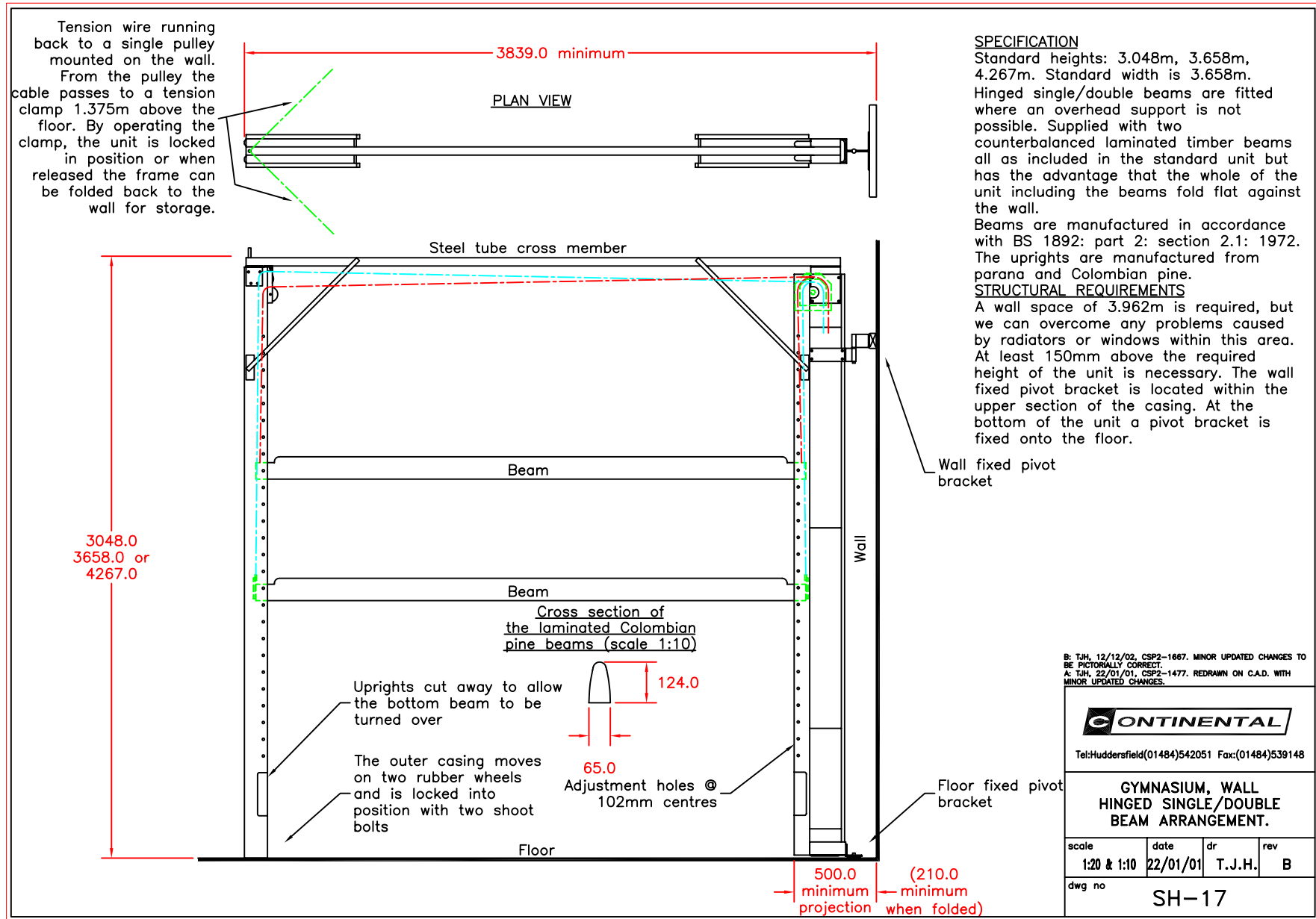
**GYMNASIUM, WALL HINGED
 TIMBER CLIMBING FRAMES
 TO B.S.1892**

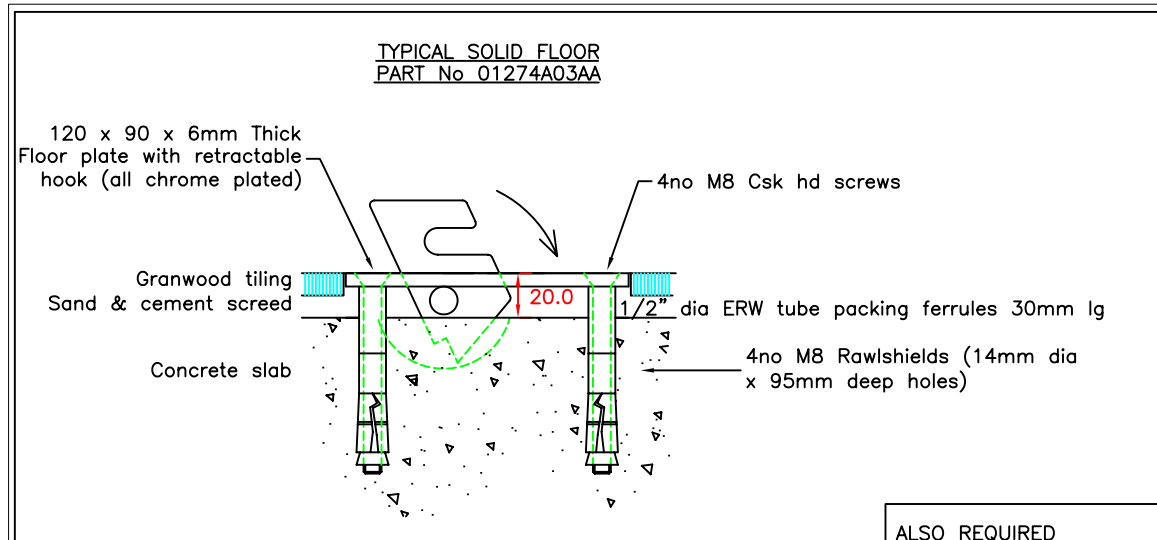
scale	date	dr	rev
1:50	16/01/01	T.J.H.	B

dwg no SH-15

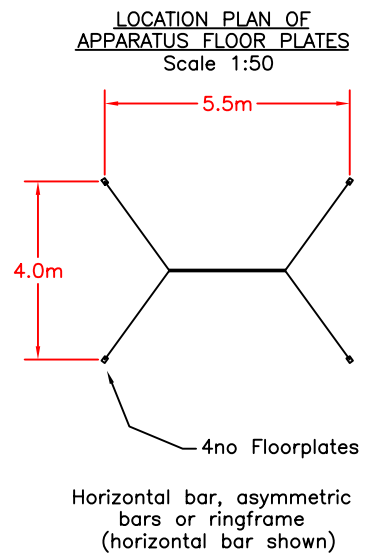
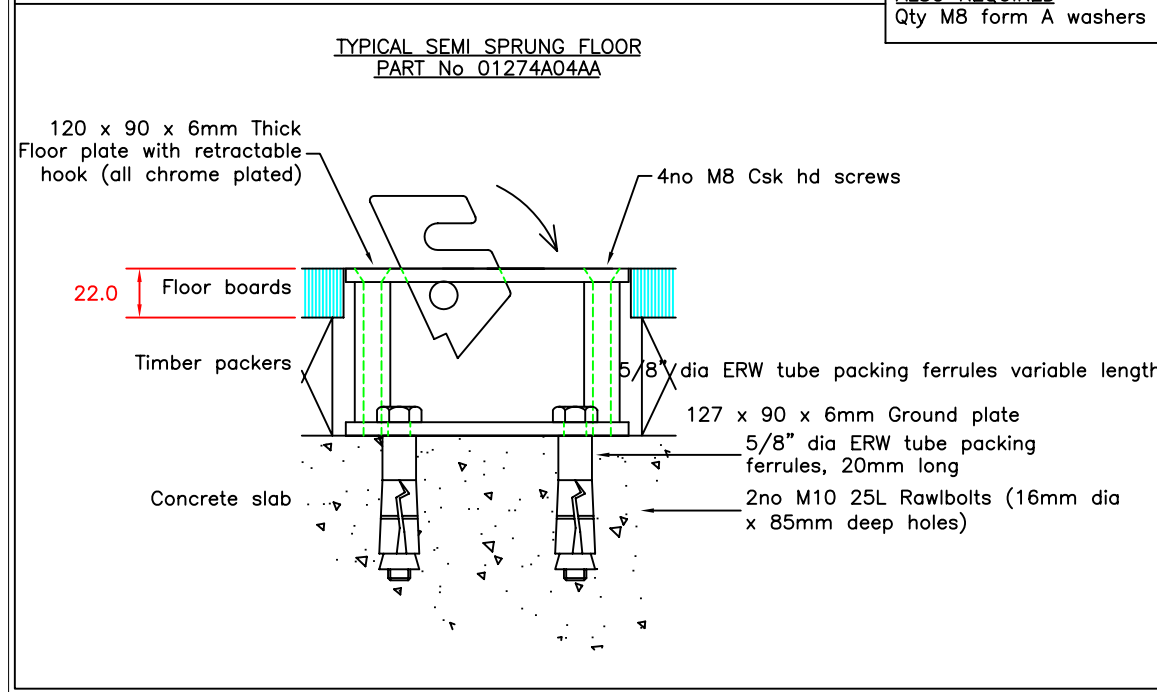
Examples of wall hinged timber climbing frames to B.S. 1892 available from Continental Sports Ltd







ALSO REQUIRED
Qty M8 form A washers



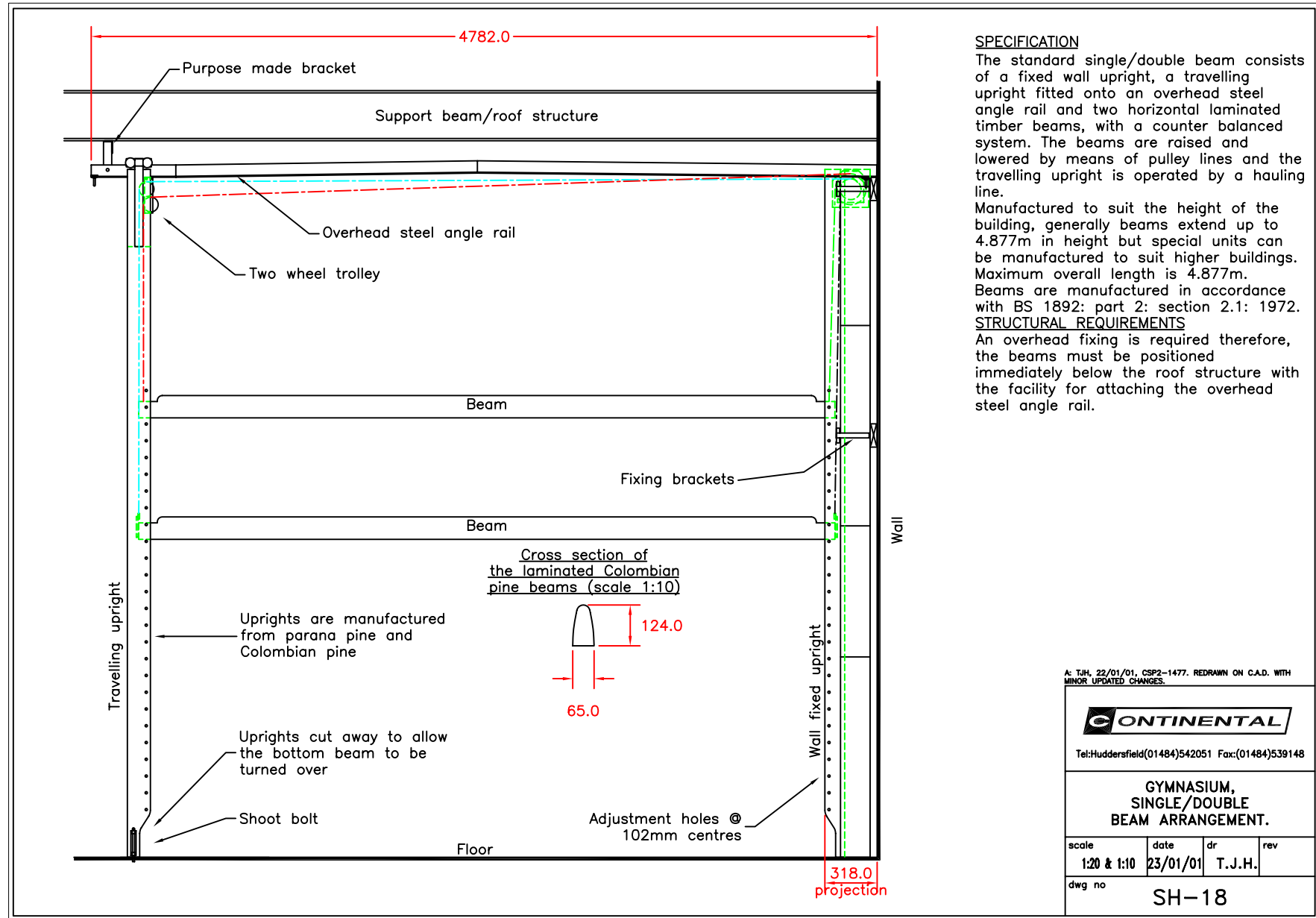
G: T.J.H. 22/01/01, CSP2-1477. REDRAWN ON C.A.D. WITH MINOR UPDATED CHANGES.



Tel:Huddersfield(01484)542051 Fax:(01484)539148

**GYMNASTIC APPARATUS
FLOORPLATE INSTALLATION
DETAILS**

scale	date	dr	rev
1:2 & 1:50	22/01/01	T.J.H.	G
dwg no	274-04		



A: T.J.H. 22/01/01, CSP2-1477. REDRAWN ON C.A.D. WITH MINOR UPDATED CHANGES.

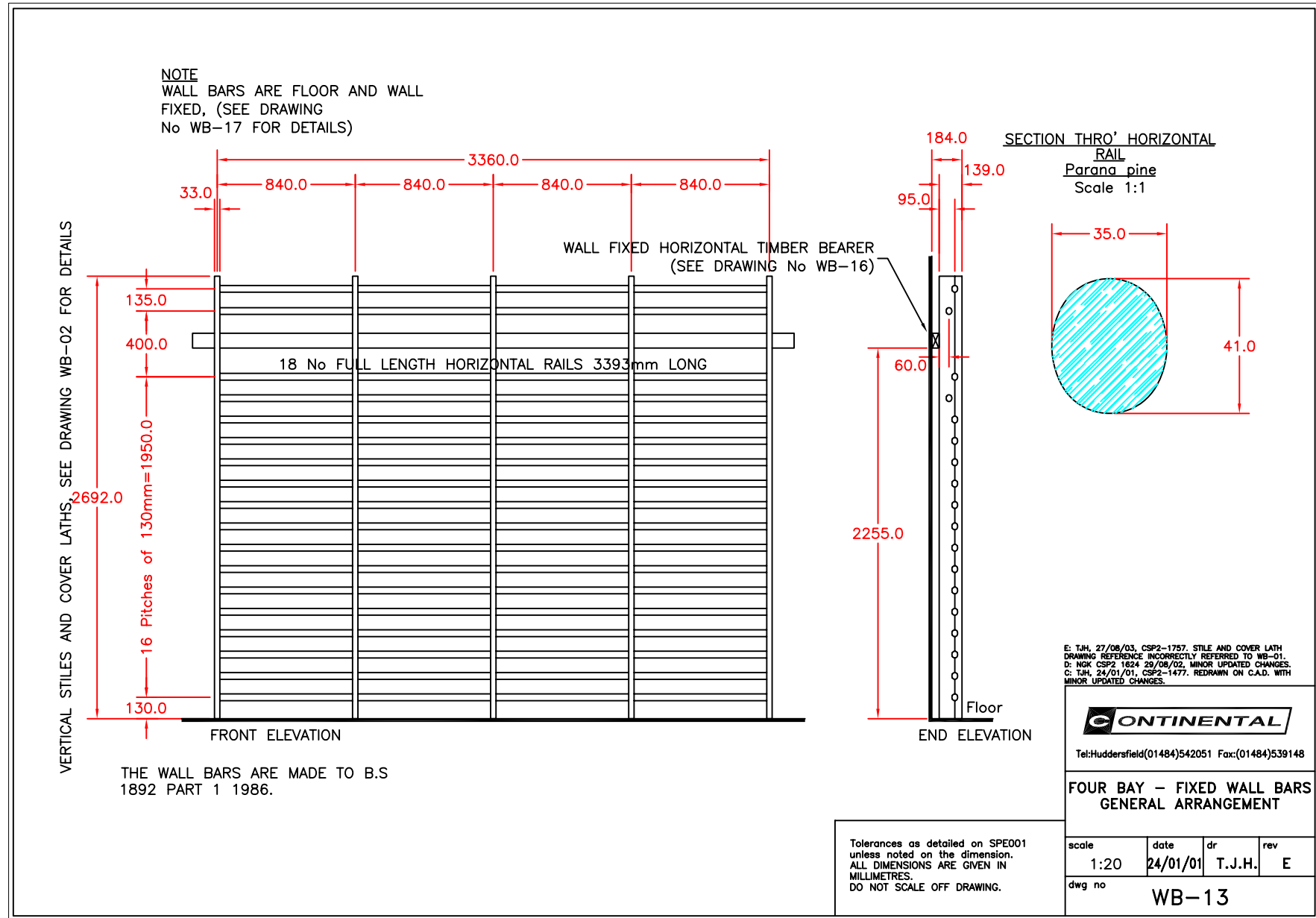


Tel:Huddersfield(01484)542051 Fax:(01484)539148

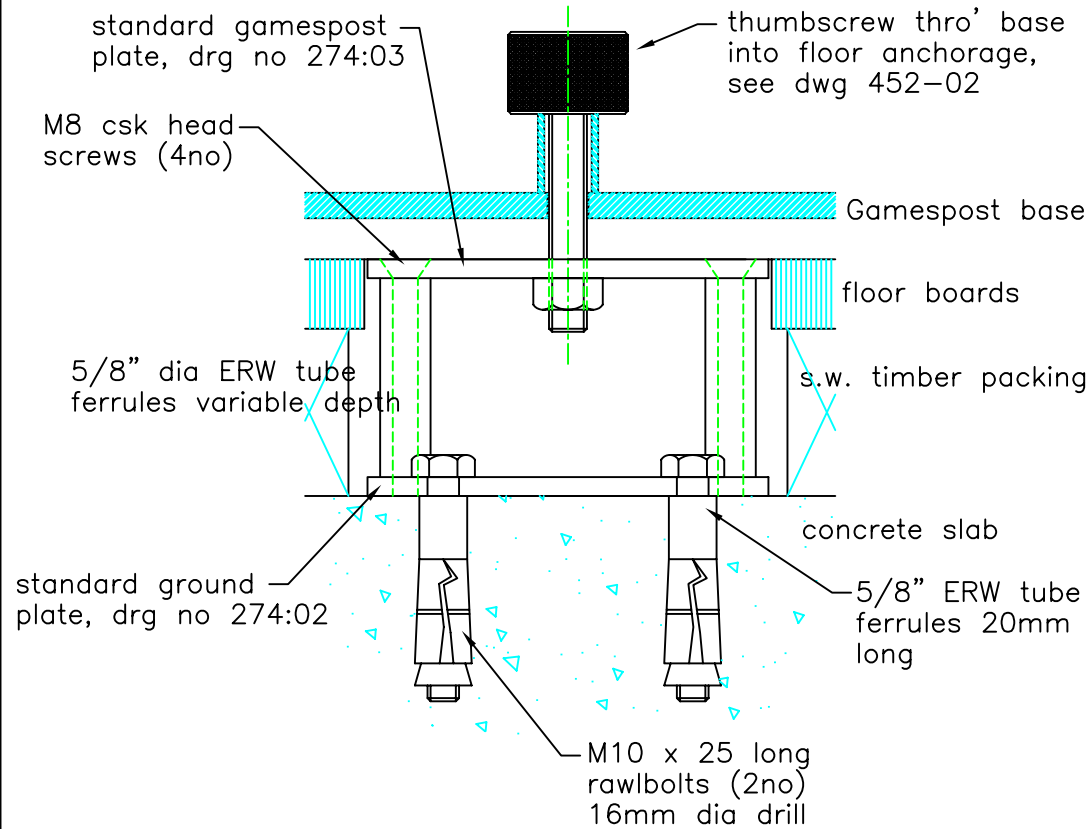
**GYMNASIUM,
 SINGLE/DOUBLE
 BEAM ARRANGEMENT.**

scale	date	dr	rev
1:20 & 1:10	23/01/01	T.J.H.	

dwg no
SH-18



SECTION THROUGH TYPICAL SEMI SPRUNG FLOOR



NOTES

1. nut welded to base of post to facilitate storage of thumbscrew when not in use.
2. for positions of post anchorages see tennis, volleyball, badminton & netball court marking drawings nos CM/06,07,01 & 05.
3. when not in use, insert M12 csk head screw into socket.
4. also required, quantity of M8 form A washers

DO NOT SCALE

C: 24/09/99, TJH, CSP2-1283. TITLE & DETAILS WERE FOR TENNIS AND VOLLEYBALL ONLY. NOW ALSO INCLUDES BADMINTON & NETBALL.
 B: TJH 08/04/99, CSP2-1255, FERRULE DIA ADDED
 A: 26/09/94 TJH CSP2 739, NOTE 4 ADDED TO DRAWING.



Tel:Huddersfield(01484)542051 Fax:(01484)539148

**GAMESPOST SEMI SPRUNG
 FLOOR ANCHORAGE.
 INSTALLATION DETAILS.**

scale	date	dr	rev
1:2	08/07/94	T.J.H.	C

dwg no **274-22**