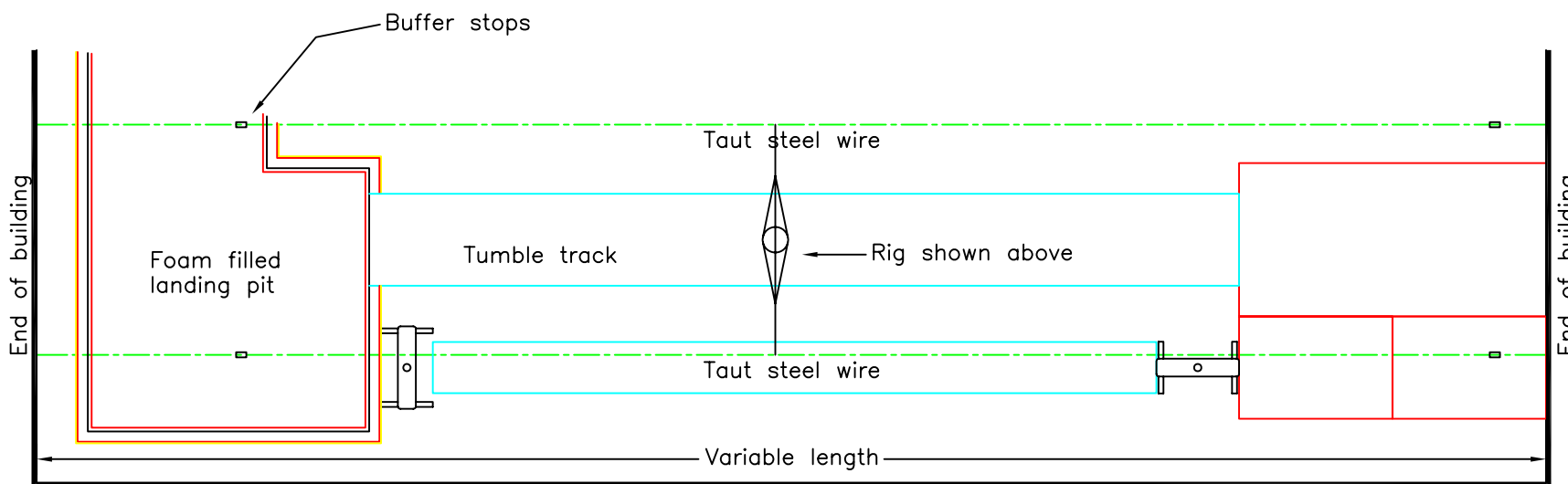
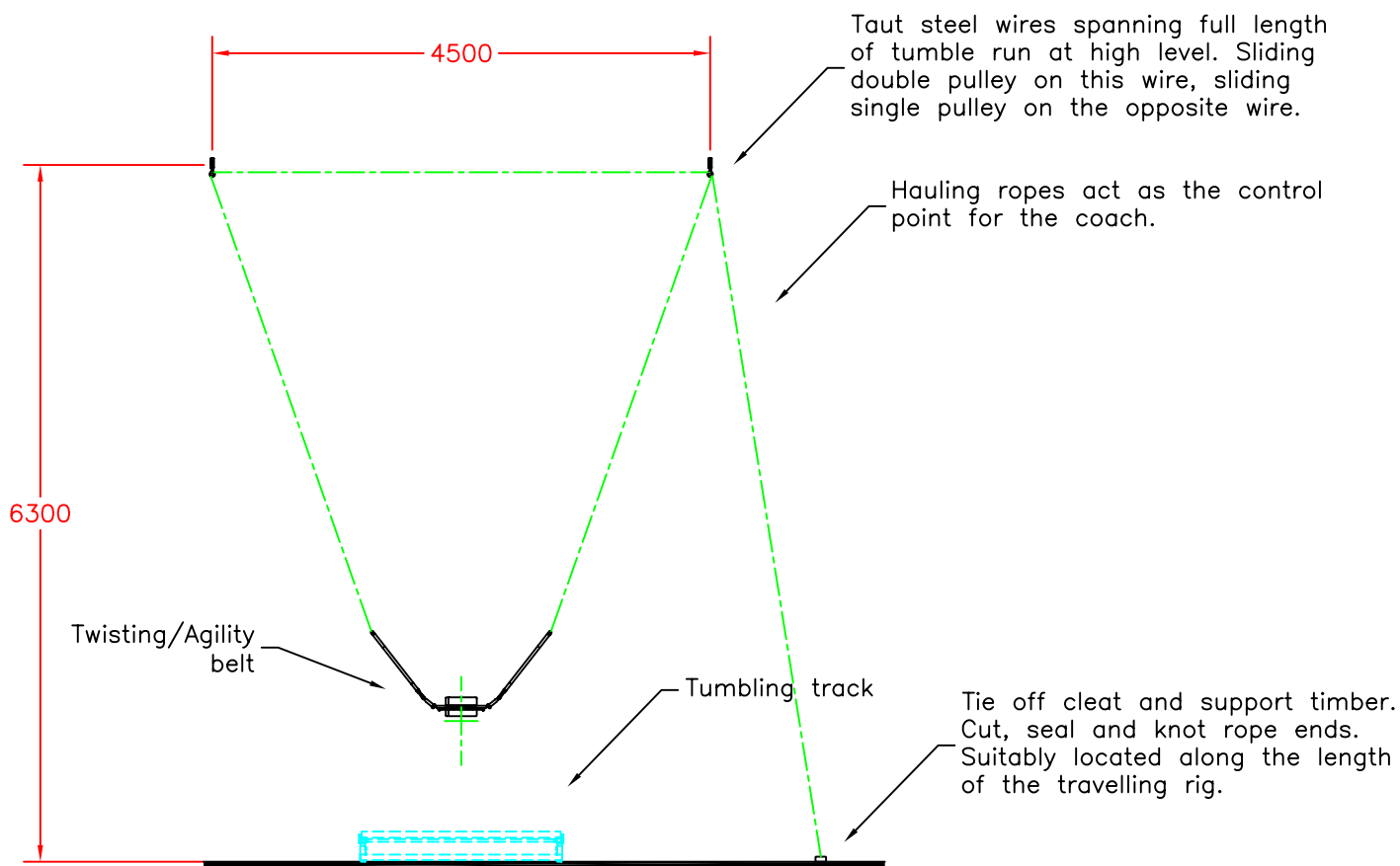


Notes

Support steelworks is required at each end of the taut steel wires and should be able to accept a maximum tensile load of 4000kgs.

Construction details of the support steels are required.



TYPICAL PLAN (Scale 1:100)

A: T.J.H., 12/01/01, CSP2-1477. REDRAWN ON C.A.D. WITH MINOR UPDATED CHANGES.



Tel:Huddersfield(01484)542051 Fax:(01484)539148

SPORTS HALL, TRAVELLING SPOTTING RIG DETAILS

scale	date	dr	rev
1:50 & 1:100	17/01/01	T.J.H.	A

dwg no **SH-19**