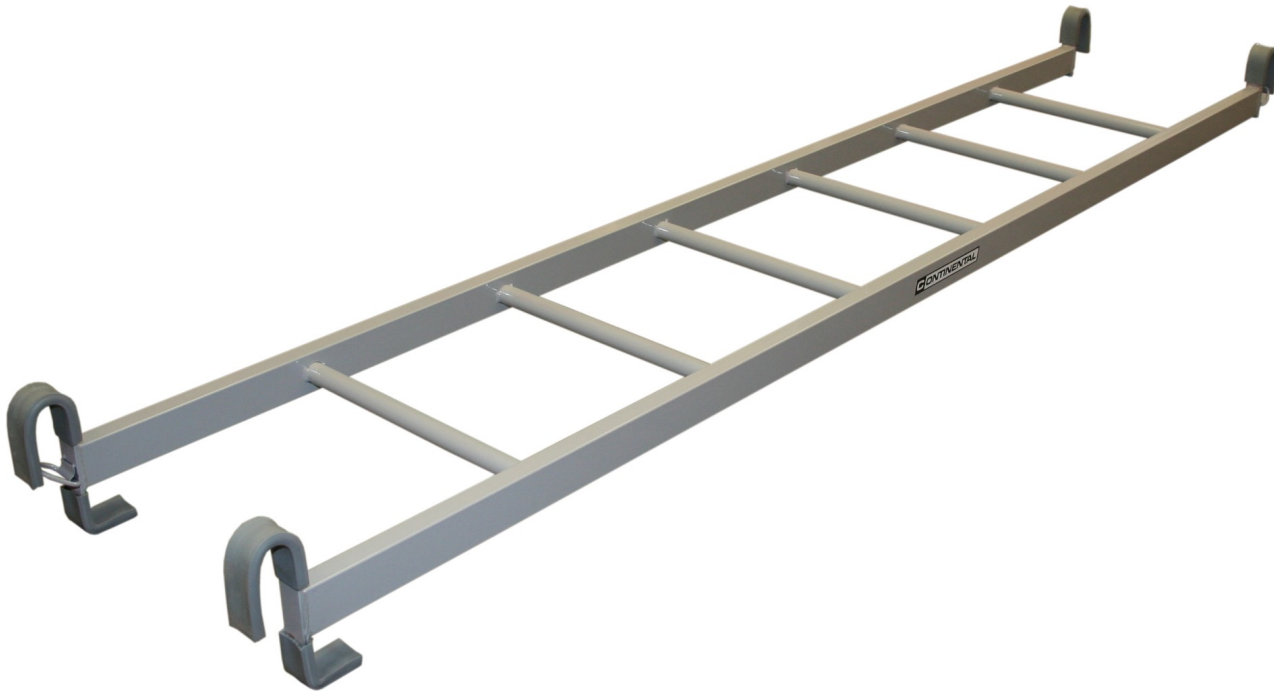


# Bridging ladder

09395AXXX



## Details

Bridging ladders are ideal for use in both fixed and portable situations.

The ladders can be used for linking between a climbing frame and a wall fixed ladder or between pairs of hinged climbing frames, or to link between trestles, nesting tables and similar portable items of PE apparatus.

The ladders feature safety locks and rubber protectors at both ends.

Available in four lengths:

- 2.1m (7') - in either a steel or aluminium construction
- 2.4m (8') - aluminium
- 2.7m (9') - aluminium
- 3.0m (10') - aluminium

Which size do I require? - For linking between pieces of portable equipment such as nesting tables and trestles, any length is suitable. For linking between wall fixed ladders and climbing frames or between wings of climbing frames it is important that you select the correct size:

- 2.1m (7') ladders are required for linking from a steel 3-gate Foldaway climbing frame and a wall fixed ladder
- 2.4m (8') ladders are required for linking from a timber 3-gate Foldaway climbing frame and a wall fixed ladder
- 3.0m (10') ladders are required for linking between pairs of wall hinged climbing frames

SKU	Options	Available Colours
09395A01AA	2.1m (7')	N/A
09395A02AA	2.1m (7')	N/A
09395B01AA	2.4m (8')	N/A
09395B02AA	2.7m (9')	N/A
09395B03AA	3.0m (10')	N/A