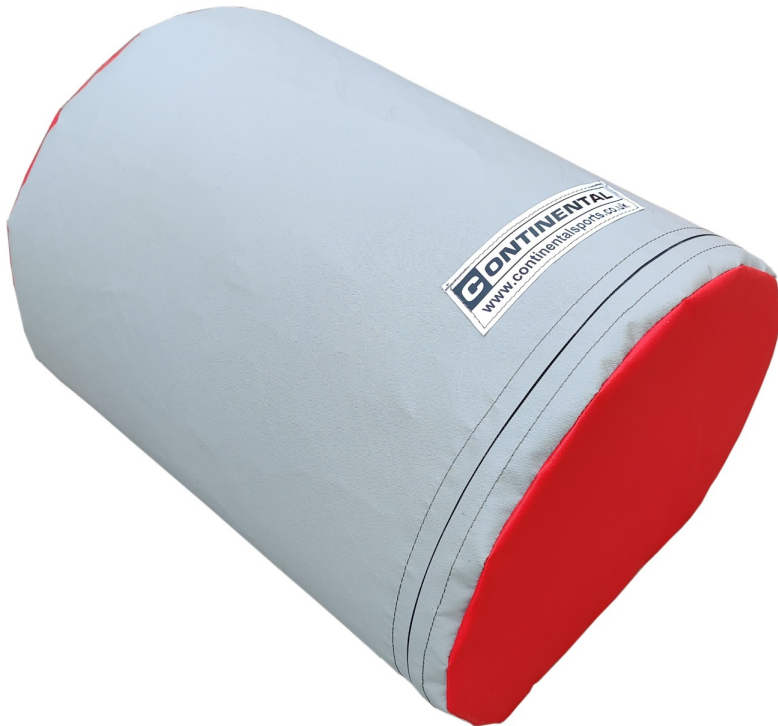


GymShape - stabilised cylinder



Details

Designed for gymnastics training, stretching, balance and fun games, the GymShape Stabilised Cylinder is made from high density 28kg/m³ polyurethane foam covered in a high density, fire-retardant PVC in grey and red.

Incorporating a zipped removable cover for easy maintenance / cleaning / replacement.

- Dimensions: 500mm x 350mm - 400mm Diameter
- Weight: 3.5kg

This GymShape is part of a range of different shapes designed for different situations in your gymnastics training facility.

All Continental GymShapes are 100% Made in Great Britain in our own factory