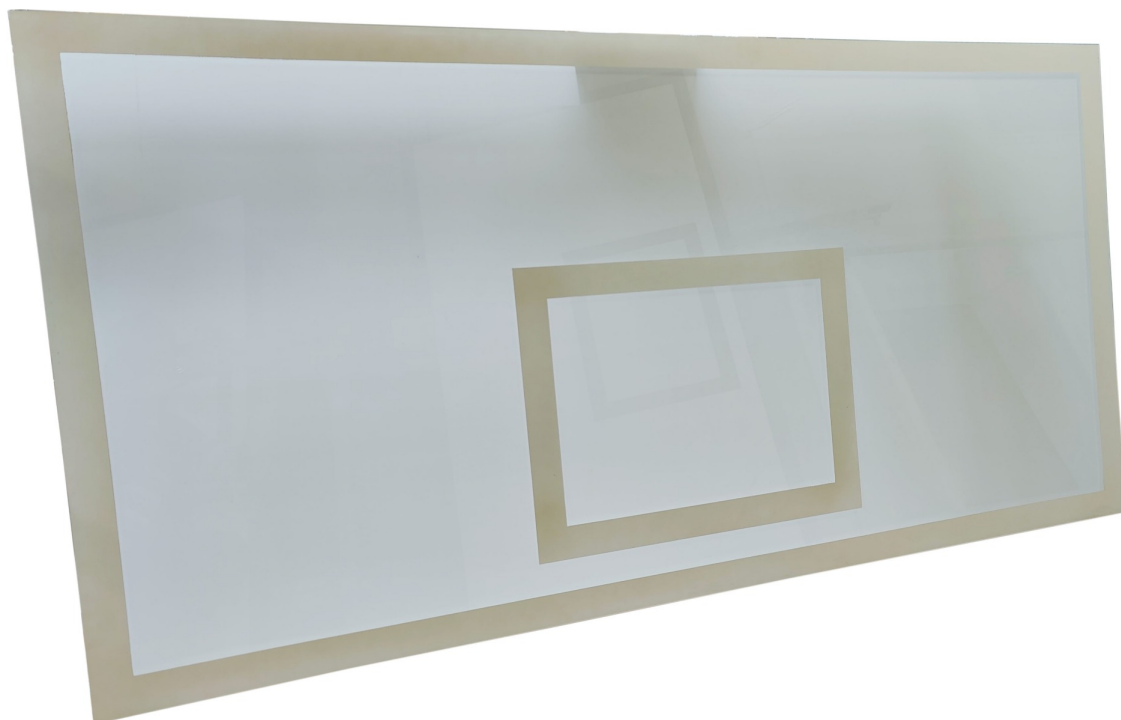


Basketball backboard - Perspex matchplay

Z18100055X



Details

We manufacture our own basketball backboards in-house.

Matchplay size boards are made from clear genuine Perspex cast acrylic. We paint in white permanent paint the board lines. The Perspex is clear, but the image shows it with the protective backing film in place that results in the milky colour - this film easily peels off the board once installed.

These boards will give you years of trouble-free usage.

The board is supplied un-drilled so you will need to drill the board to suit your ring and mounting.

The price shown is for one board only SUPPLY ONLY.

PLEASE NOTE: Perspex backboards must always be installed onto a steel back frame. If your existing board bracketry does not have a steel back frame that completely spans the perimeter of the back of the board, then please select the version WITH a steel back frame

SKU	Options	Available Colours
Z181000550	Backboard ONLY	N/A
Z181000555	Backboard AND steel back frame	N/A