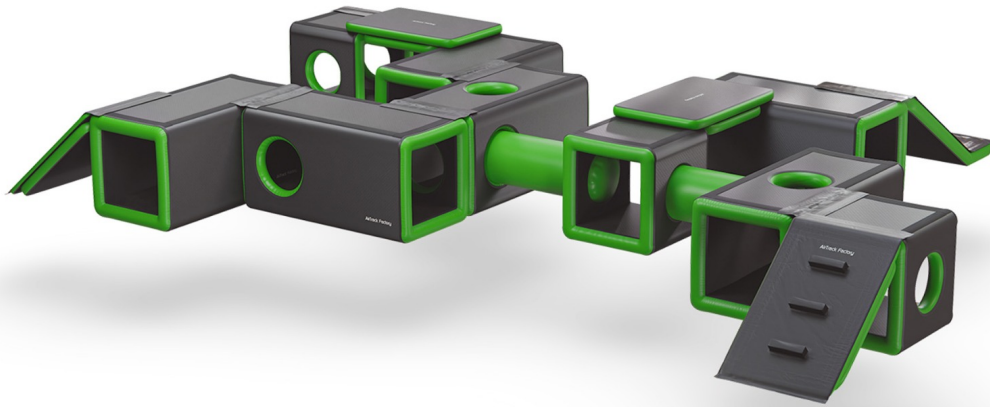


# AirMove 'n' Groove - Set 4



## Details

More Space, More Fun the AirMove 'n' Groove SET 4 covers approximately 68m<sup>2</sup> of space

The biggest and most dynamic AirMove 'n' Groove play experience, SET 4 is an infallible playground for up to 28 kids offering an expansive and exciting play space with tunnels, bridges, slides, bridges and play zones for non-stop excitement, action and adventure.

With tunnels, slides and climbing elements, SET 4 provides maximum fun and flexibility.

Whether arranged as a giant maze, a long obstacle course, or an open play area, its modular design allows for never-ending possibilities.

**PLEASE NOTE:** When used in an indoor play area where a trainer or teacher is not continuously present, these items should be used on a cushioned floor such as an area of our Tribond carpet surface matting.