

**CONTINENTAL SOLID GRADE LAMINATE LOCKERS – DIMENSIONS & SPECIFICATIONS.**

**Description.**

Lockers with 13mm solid grade laminate doors and end panels, aluminium body and doorframe uprights and injection moulded polypropylene shelves with ventilation/drainage holes.  
 1800mm high, 500mm deep, 340mm or 300mm wide with 1,2,3 or 4 doors per tier.

Delivered and installed by our own technicians.

Anodised aluminium number plates.

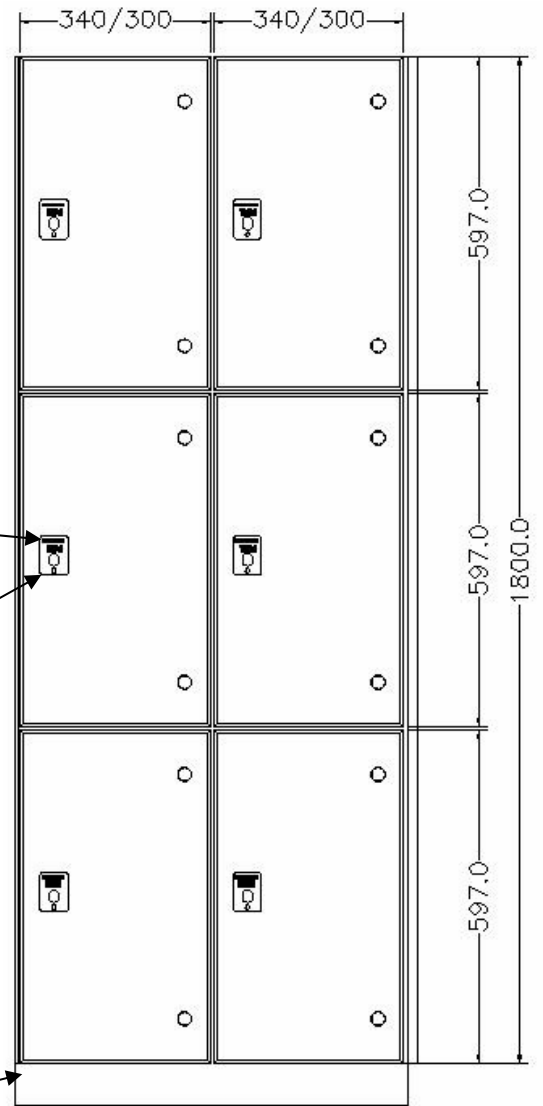
Choice of cam or coin locks. For coin locks we strongly recommend removable cylinder type. This reduces the potential ongoing cost and inconvenience of lost/stolen keys. Ask for further details.

Lockers fixed to wall. Back to back lockers fixed to plinth.

Supplied in one, two, three (as shown) or four door tiers plus combinations e.g. 2 x ¼ over ½.

13mm solid grade laminate doors in wide range of colours. (samples available)

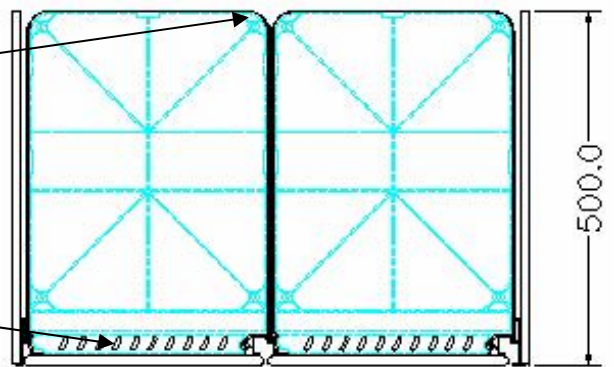
We provide a plinth for the lockers to stand on. Alternatively a concrete plinth can be provided by the builder.



One piece aluminium body with radius corners.

13mm solid grade laminate end panels provided for exposed ends of runs.

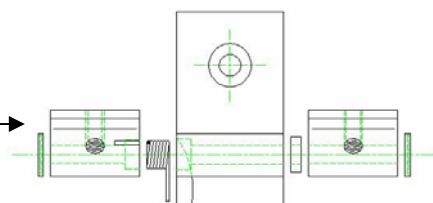
Injection moulded polypropylene tops, shelves bases with ventilation / drainage holes.



Unique extruded aluminium doorframe uprights

**Hinge**

Aluminium sprung loaded hinge captured within the doorframe extrusion for maximum strength.



**Continental Sports Ltd.**

Paddock, Huddersfield, West Yorkshire, England, HD1 4SD.

Tel: (01484) 542051 Fax: (01484) 539148

E-Mail: [sales@contisports.co.uk](mailto:sales@contisports.co.uk)

Website: <http://www.continentalsports.co.uk>